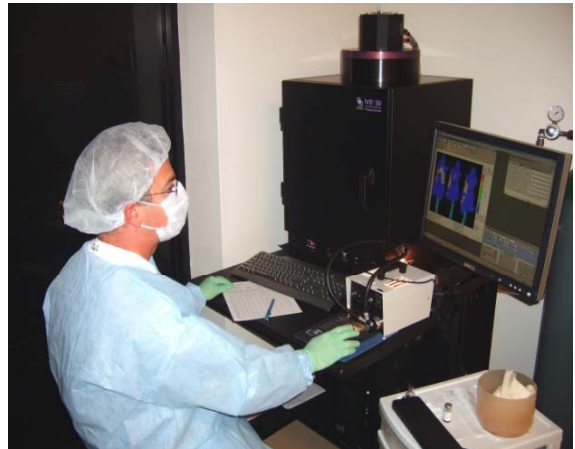


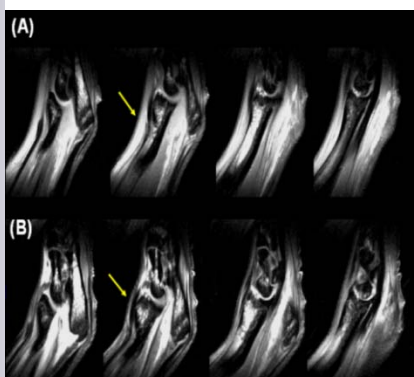
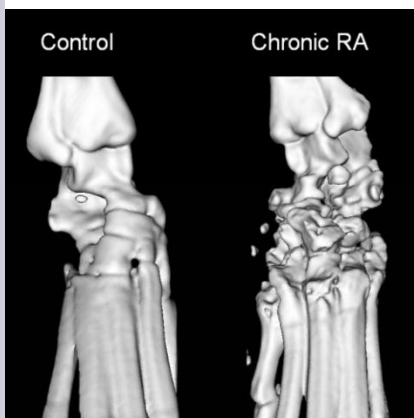
INFLAMMATION SERVICES

Our Inflammation Services group offers a wide range of animal models for the study of acute and chronic inflammatory conditions. By combining pharmacology studies with our state of the art imaging expertise, MIR can produce comprehensive data packages for our clients. We offer traditional endpoints as well as histology, imaging, cytokine profiling and target modulation endpoints



Models currently being offered include:

- Rheumatoid Arthritis
 - Collagen Induced Arthritis (CIA)
 - LPS Synchronized CIA
 - Collagen Antibody Induced Arthritis (CAIA)
 - Adjuvant Induced Arthritis (AIA)
- LPS-Induced Cytokine Release
- Carrageenan-Induced Footpad Edema
- Sponge Granuloma (Acute and Chronic)
- Delayed-Type Hypersensitivity
- Inhibition/Promotion of Angiogenesis
- Atherosclerosis (Utilizing GEM Mice)
- Inflammation Studies utilizing PET, MRI, CT and Optical Imaging Endpoints
- T-Cell Induced Irritable Bowel Disease (Under Development)



Innovation in Drug
Evaluation

MIR Preclinical Services



Expertise

Dr. Joe Cornicelli, MIR's Director of Inflammation Services comes to the company with over 22 years of research experience in conducting and directing studies in inflammation and cardiovascular therapeutics. This experience allows the company to develop unique and customized protocols that will best suite clients needs. Consulting on study design is included as part of the services MIR offers. This adds significantly value to the service clients receive.

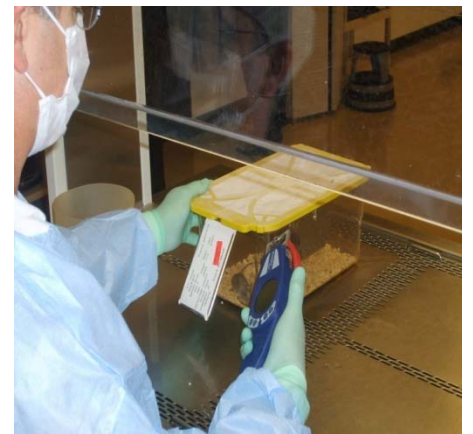


Additional Services

MIR offers a number of services that augment its inflammation offerings. These services include pharmacokinetics, pharmacodynamics, cytokine profiling, histology, immunohistochemistry, small animal imaging, drug induced target modulation, and customized biochemistry assays by request.

Model Development

MIR is actively developing and validating the use of its preclinical small animal PET, MRI, CT and optical imaging technology to augment its current inflammation offerings. The company believes that active collaborations with clients is the most efficient way of moving this development forward and is actively pursuing these collaborative efforts. MIR also has plans to develop new models of irritable bowel disease (IBD), experimental allergic encephalomyelitis (EAE) and lupus.



MIR:

If you would like more information on this, or any other MIR service, please feel free to contact the company using the information given below. MIR can also set up a webinar conference to discuss services, technology, capabilities, strategies and protocol design. Let MIR help you meet your preclinical research needs.